

# Pintuck

*A Taffeta that has been tailored by small stitching in a diamond pattern for a faux quilted texture. This lustrous fabric is a sure winner for your affair in multiple color selections.*

*Sizes: 90x90 square, 120 Rd, 132 Rd  
And 90x156 banquet.*

*Note: Dye lots may vary more than average. LDL will not be responsible for shade variations from the manufacturer.*



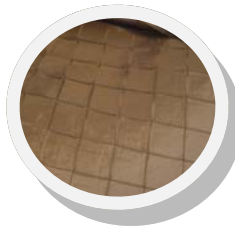
Orange Pintuck with Maize Napkins



Berry



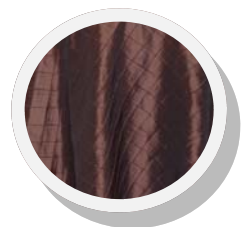
Black



Bronze



Burgundy



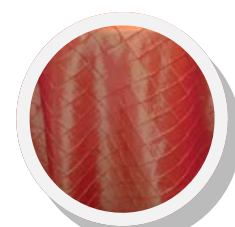
Dark Brown



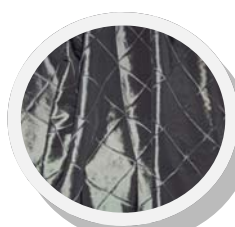
Ivory



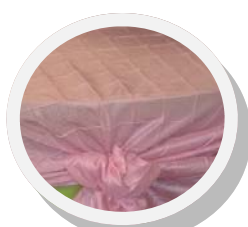
Tan



Orange



Pewter



Lt. Pink



Royal



Sage



White

